

Roof Penetration Kits

Top Hat Roof Penetration Kits

Code	Description	
RPK65	Top Hat Roof Penetration Kit 65mm pipe size up to 3/8-5/8	S
RPK110	Top Hat Roof Penetration Kit 80 - 110mm pipe size	S



- Heatpump pipework and wiring
- Solar hot water pipework
- Solar electric wiring
- Refrigeration piping and wiring
- Satellite dishes wiring
- Roof top plant piping and wiring
- Evaporative (swamp) cooler piping and wiring

Consists of:

- Flashing
- PVC overflashing
- PVC slotted pipe
- PVC cap
- Silicon sealant
- Hex screws

The Top Hat roof penetration kit consists of 4 components that, when installed together create a roof penetration system that gives the best insurance against water leaks.

It is the only product of its type on the market and it is the only product that directly caters for the penetration of HVAC, solar and plumbing pipe work, electrical conduits and cables.

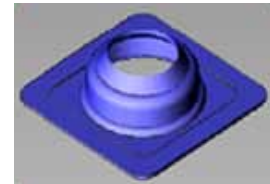
The fact that the services must slope downwards before being able to travel upwards is the safeguard of the TopHat penetration kit that ensures water cannot travel up the services from the roof and into the PVC tube.

TopHat Roof Penetration Kits are compliant with section 6.3.1 of the NZ Metal Roofing Manufacturers Association code of practice (which has been adopted by the building code).

The 4 components are as follows:

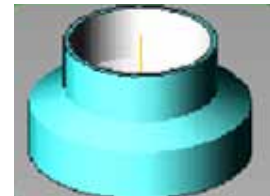
Standard Rubber Boot Flashing

The TopHat kit uses a rubber boot flashing which creates a seal between roof cladding and the PVC tube (which is part of the kit). Silicone sealant is used to assist with creating the seal between the base of the boot flashing and the roof cladding. Hex head screws fasten the base of the boot flashing to the roof cladding.



PVC Over Flashing

The moulded PVC over flashing protects the seal between the boot flashing and the PVC tube as well as supporting the tube. A PVC solvent cement connection between the PVC tube and the PVC overflashing stops water from running down the PVC tube and sitting on the boot flashing-pvc tube seal. The "umbrella" coverage of the over flashing also protects the top part of the boot flashing from u.v. rays. The over flashing is moulded to fit two different sizes of PVC tube, 50mm and 65mm.



PVC Tube

The PVC tube provides a mechanically protective path and support for Services from the ceiling space to above the roof line. It also ensures that the boot flashing seals against a consistent circumference surface. The slot cut into the top of the PVC tube enables the services to be easily bent through 180 degrees without kinking pipe work or drain pipe.



PVC Cap

The PVC cap connects onto the top of the PVC tube once the services have been installed and routed through the PVC pipe slot. It is held onto the top of the PVC tube via a neat fit socket and is ultimately held into place by a bonded PVC solvent cement connection between the cap and the PVC tube. The cowl of the cap means that any services must follow a path downwards before being able to travel upwards. The over flashing is moulded to fit two different sizes of PVC tube, 50mm and 65mm.



Continued on
next page

Due to a policy of continuous development, prices and specifications are subject to change without notice.

Christchurch 351c Blenheim Rd

(From 2019: 264 Annex Rd), PO Box 8358

Riccarton 03 343 6184

Wellington

18 Armidale St, (PO Box 8358, Chch)

Petone 04 566 7969

Auckland

6 Stanway Pl, PO Box 12-243

Penrose 09 579 3257

0800 SMOOTH (0800 766 684)

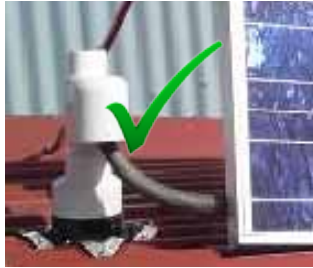
www.smooth-air.co.nz

sales@smooth-air.co.nz

Roof Penetration Kits (continued)

For Compliant Penetrations - use Top Hat Penetration Kits

Compliant with section 6.3.1 of the NZ Metal Roofing Manufacturers Association code of practice (which has been adopted by the building code).



✓ Compliant



✗ Non-Compliant

Due to a policy of continuous development, prices and specifications are subject to change without notice.

Christchurch 351c Blenheim Rd (From 2019: 264 Annex Rd), PO Box 8358	Wellington 18 Armidale St, (PO Box 8358, Chch)	Auckland 6 Stanway Pl, PO Box 12-243	0800 SMOOTH (0800 766 684) www.smooth-air.co.nz
Riccarton 03 343 6184	Petone 04 566 7969	Penrose 09 579 3257	sales@smooth-air.co.nz