



Domestic Axial Inline Fans - VENTS - VKO1 Series

Applications

- Continuous or periodic exhaust ventilation of bathroom, showers, kitchens and other utility spaces.
- Can be used for supply or extract.
- Designed for PVC ducting system or flexible ducts.
- Low to medium air flow for short distances at low air resistance.

Design

- The casing and impeller are made of high-quality durable ABS plastic, UV resistant.
- The clever impeller design makes for high fan efficiency and long service life.
- Protection rating IPX4

Motor

- Reliable and low-watt electric motor.
- Designed for continuous operation and requires no maintenance.
- Equipped with overheating protection.
- The motor is equipped with ball bearings for long service life (approx 40,000 hours) and fan mounting at any angle. The bearings are maintenance-free and contain enough grease for the entire operating period.
- 5-blade low-noise impeller with improved aerodynamics for higher fan capacity.

Control

- The fan can be controlled by a standard light switch (not included).
- Speed control is possible through a thyristor speed controller (eg VERS-1-400). Several fans may be connected to the same regulator unit.

Mounting Features

- The mounting bracket enables fan installation on both horizontal and vertical flat surfaces (VKO1k model).
- Two fans can be mounted in series for higher performance.



VKO1 Series without mounting bracket



VKO1k Series with mounting bracket

Type	Voltage at 50Hz V	Power W	Consumption current A	Frequency rpm	Max extract capacity m ³ /h	Max air pressure Pa	Noise level dBA	Weight kg
100VKO1Lpress	230	16	0.100	2300	108	39	37	0.41
125VKO1Lpress	230	24	0.105	2400	194	39	38	0.43
150VKO1Lpress	230	36	0.160	2400	317	42	40	0.80

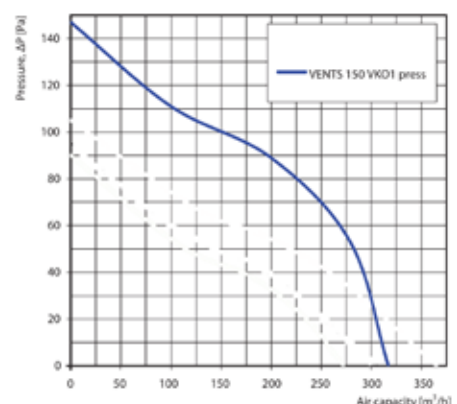
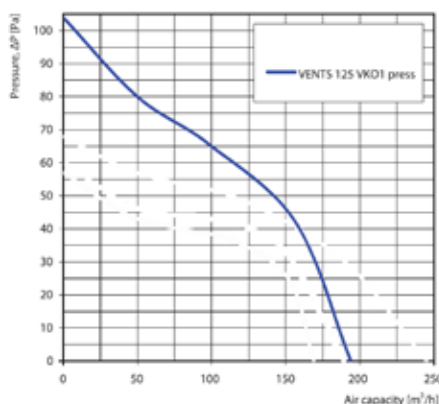
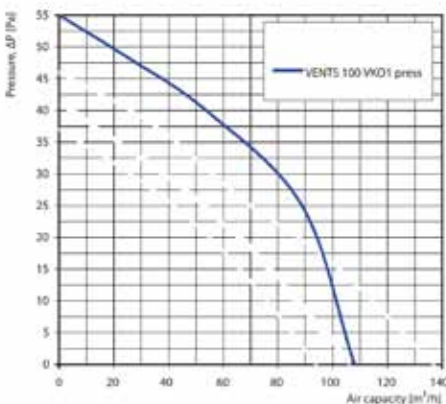


L - ball bearings standard



Press - improved impellor standard

Performance Graphs



Certifications: CE, GS, WEEE, B, IP X4

VKO1 Fans continued on next page

See also Price Catalogue p16b

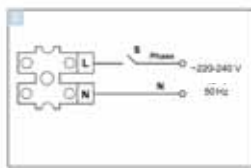
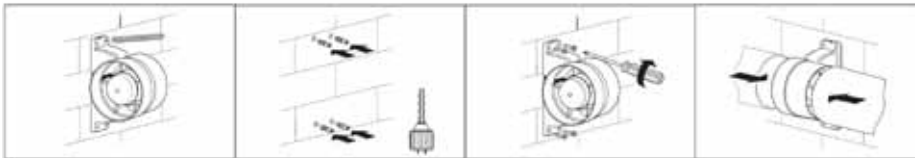
Due to a policy of continuous development, prices and specifications are subject to change without notice.

Smooth-Air Christchurch: Wellington: Auckland:	0800 SMOOTH (0800 766 684) 264 Annex Rd, PO Box 8358, Riccarton 10a Te Puni St, Petone (PO Box 8358, Chch) 6 Stanway Pl, PO Box 12-243, Penrose	www.smooth-air.co.nz Ph +64 3 343 6184 Ph +64 4 566 7969 Ph +64 9 579 3257	sales@smooth-air.co.nz Fax +64 3 343 6004 Fax +64 4 566 3143 Fax +64 9 579 3259
--	--	---	--

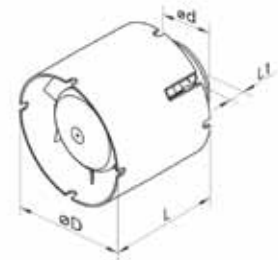


31b Domestic Axial Inline Fans - VENTS - VKO1 Series (continued)

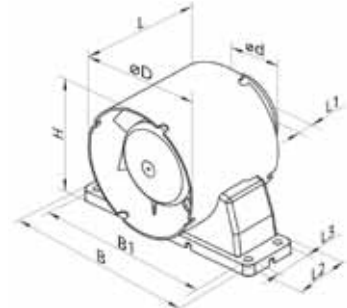
Dimensions, mm									
Type	ØD	Ød	B	B1	H	L	L1	L2	L3
100VKO1k	100	59	160	144	110	85	28	45	29
125VKO1	125	59	-	-	-	90	28	-	-
150VKO1k	150	59	200	184	162	100	28	45	29



Wiring diagram for VENTS domestic fans without built-in switch [for info only, check user's manual with fan].



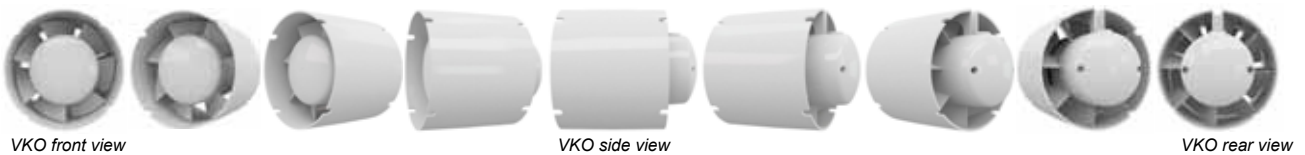
VKO1 without mounting bracket



VKO1k with mounting bracket



VKO1k bathroom example



VKO front view

VKO side view

VKO rear view

Accessories

Dif fusers and air disk valves



Air ducts



Grilles and hoods



Backdraft damper



Speed controllers



Clamps



See also Price Catalogue p16b

Due to a policy of continuous development, prices and specifications are subject to change without notice.

Smooth-Air
Christchurch: 0800 SMOOTH (0800 766 684)
 264 Annex Rd, PO Box 8358, Riccarton
Wellington: 10a Te Puni St, Petone (PO Box 8358, Chch)
Auckland: 6 Stanway Pl, PO Box 12-243, Penrose

www.smooth-air.co.nz
 Ph +64 3 343 6184
 Ph +64 4 566 7969
 Ph +64 9 579 3257

sales@smooth-air.co.nz
 Fax +64 3 343 6004
 Fax +64 4 566 3143
 Fax +64 9 579 3259