

## Domestic Wall/Ceiling Fans - Auto Shutter - VENTS - MA Series

### Applications

- Continuous or periodic exhaust ventilation of bathroom, showers, kitchens and other utility spaces.
- Ventilation shaft mounting or duct connection.
- Low to medium air flow for short distances at low air resistance.

### Design

- Modern design and aesthetic look.
- The casing and the impeller are made of high-quality durable ABS plastic, UV resistant.
- The clever impeller design makes for high fan efficiency and long service life.
- The fan is equipped with a thermal actuator that provides smooth opening and closing of the automatic louvre shutters to prevent back draft.
- Protection rating IP 24.

### Motor

- Reliable and low-watt electric motor.
- Designed for continuous operation and requires no maintenance.
- Equipped with overheating protection.
- The 230v motors are equipped with ball bearings for long service life (approx 40,000 hours) and fan mounting at any angle. The bearings are maintenance-free and contain enough grease for the entire operating period.

### Options

- MA 12 Equipped with a reliable low-voltage motor, 12V.
- MAT - equipped with a regulated timer, with operating time from 2 to 30 mins.
- MATH - equipped with a regulated timer, with operating time from 2 to 30 mins and a humidity sensor with threshold value of 60 to 90%.
- MAV - equipped with a pull cord switch.
- MATP - equipped with a regulated timer and a motion sensor with sensitivity area from 1 to 4m and detection angle up to 100°.

### Manual Control:

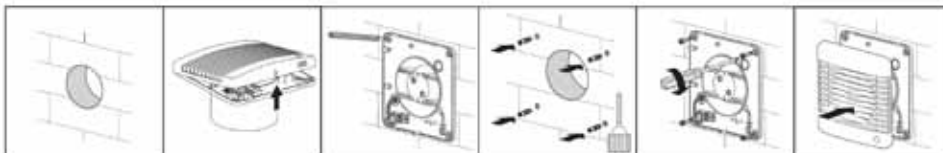
- The fan can be controlled by a standard light switch (not included).
- MA V - by the built-in pull cord switch. Not suitable for ceiling mounting.
- Speed control is possible through a thyristor speed controller (eg VERS-1-400). Several fans may be connected to the same regulator unit.

### Automatic Control:

- T - by the timer (the built-in run-out timer enables the fan operation from 2 to 30 minutes after the fan is switched off).
- TH -by the humidity sensor and timer (if the humidity level in the room exceeds the sensor threshold adjustable value within 60-90% the fan switches on automatically and operates until the humidity level drops to the standard level, after which the fan continues operating within the time period according to the timer setting, then stops).
- TP -by the motion sensor and the timer (in case of motion detection the fan switches on automatically and operates within the set time period from 2 to 30 minutes. The motion sensitivity area is up to 4 meters and the maximum detection angle is 100°.

### Mounting features

- The fan can be mounted directly into the ventilation shaft.
- Use flexible ducting for remote locations.
- Can be fixed to the wall with self tapping screws.
- Suitable for ceiling mounting.
- TFlange of 92 mm length for easy mounting into concrete walls and floor decks up to 100 mm thick.



MA Series Fan



L - Ball bearings standard



S - 12 V optional



T - Timer optional



TH - Timer & Humidity sensor optional



V - pull cord switch optional



TP - Timer & Motion sensor optional

### Certifications:



MA Fans continued on next page

*Due to a policy of continuous development, prices and specifications are subject to change without notice.*

Christchurch	Wellington	Auckland	0800 SMOOTH (0800 766 684)
264 Annex Rd, PO Box 8358	18 Armidale St, (PO Box 8358, Chch)	6 Stanway Pl, PO Box 12-243	www.smooth-air.co.nz
<b>Riccarton</b> 03 343 6184	<b>Petone</b> 04 566 7969	<b>Penrose</b> 09 579 3257	sales@smooth-air.co.nz

## Domestic Wall/Ceiling Fans - Auto Shutter - VENTS - MA Series (continued)

### Specifications

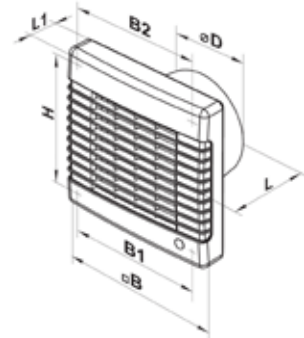
Type	Voltage at 50 Hz V	Power Consumption W	Current A	Frequency rpm	Max extract capacity m <sup>3</sup> /h	Max air pressure level 3m Pa	Noise dBA	Weight kg
VE100 MAL	220-240	18	0.085	2300	98	35	34	0.65
VE125 MAL	220-240	22	0.100	2400	185	55	35	0.75
VE150 MAL	220-240	26	0.130	2400	295	88	39	1.02

### Specifications - 12V Model

Type	Voltage at 50Hz V	Power Consumption W	Current A	Frequency rpm	Max extract capacity m <sup>3</sup> /h	Max air pressure level 3m Pa	Noise dBA	Weight kg
VE150 MA12	12	24	2.0	2300	263	83	38	0.98

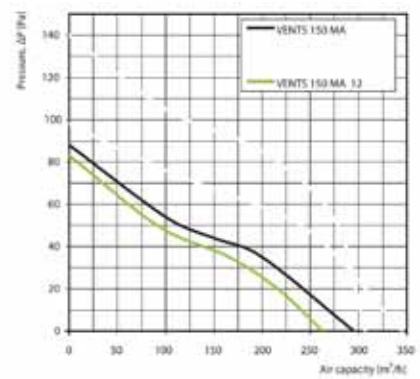
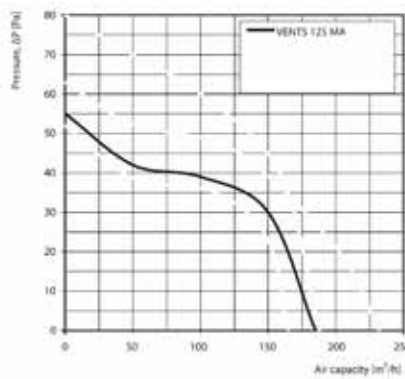
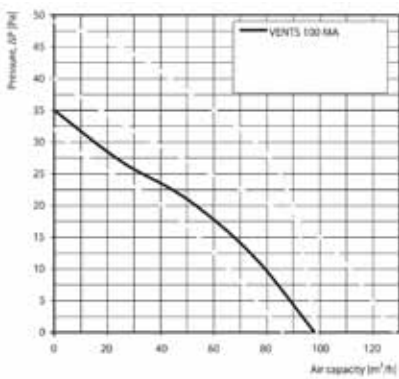
### Dimensions, mm

Type	ØD	B	B1	B2	H	L	L1
VE100 MAL	100	165	150	150	150	92	32
VE125 MAL	125	190	174	128	173	98	33
VE150 MAL	150	212	196	150	195	114	33



MA Series Fan

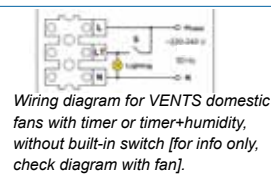
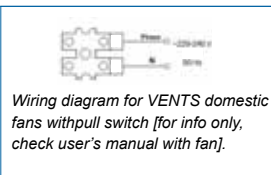
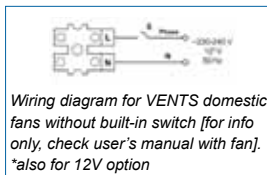
### Performance Graphs



Fan ON  
louvre shutters OPEN



Fan OFF  
louvre shutters CLOSED



MA Bathroom example



Due to a policy of continuous development, prices and specifications are subject to change without notice.

**Christchurch**  
264 Annex Rd, PO Box 8358  
Riccarton 03 343 6184

**Wellington**  
18 Armidale St, (PO Box 8358, Chch)  
Petone 04 566 7969

**Auckland**  
6 Stanway Pl, PO Box 12-243  
Penrose 09 579 3257

**0800 SMOOTH** (0800 766 684)  
www.smooth-air.co.nz  
sales@smooth-air.co.nz